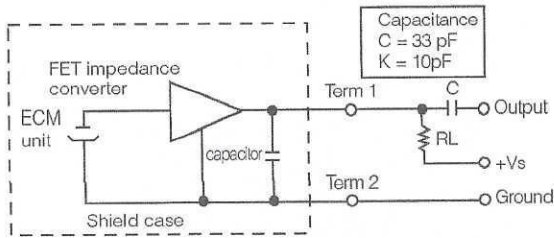


## Schematic Diagram

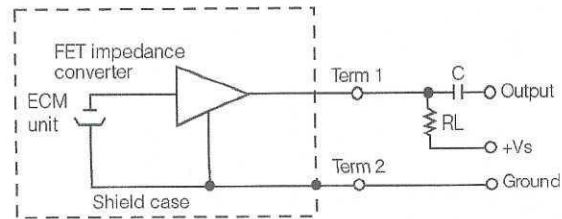


### Standard Operating Conditions:

$V_s = 2.0V$   $R_L = 2.2k\Omega$

### Model No.

WM-63GC series  
 WM-64C series  
 WM-64K series  
 WM-64BC series  
 WM-64BK series  
 WM-64MC series  
 WM-64PC series  
 WM-64PK series  
 WM-62PC series  
 WM-62PK series  
 WM-62CC series  
 WM-62K series  
 WM-66EC series  
 WM-66DC103



### Standard Operating Conditions:

$V_s = 2.0V$   $R_L = 2.2k\Omega$

### Model No.

WM-64A series  
 WM-62A series  
 WM-62C series  
 WM-62B series  
 WM-61A series  
 WM-61B series  
 WM-60A series  
 WM-66D103  
 WM-67D103  
 WM-65A103

### Standard Operating Conditions:

$V_s = 1.5V$   $R_L = 680\Omega$

### Model No.

WM-55D103  
 WM-55A103  
 WM-56A103

### Standard Operating Conditions:

$V_s = 1.5V$   $R_L = 3.0k\Omega$

### Model No.

WM-52B series

### Standard Operating Conditions:

$V_s = 2.5V$   $R_L = 2.2k\Omega$

### Model No.

WM-54B series

### Standard Operating Conditions:

$V_s = 4.5V$   $R_L = 2.2k\Omega$

### Model No.

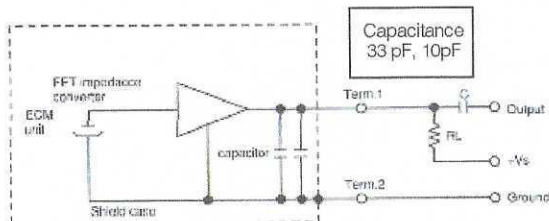
WM-034B series  
 WM-034C series  
 WM-034M series

### Standard Operating Conditions:

$V_s = 1.5V$   $R_L = 1.5k\Omega$

### Model No.

WM-034D series  
 WM-034DB series  
 WM-034N series



### Standard Operating Conditions:

$V_s = 2.0V$   $R_L = 2.2k\Omega$

### Model No.

WM-64MN series  
 WM-64PN series  
 WM-63GN series